

MEDIA CONTACT:

Lynda Falcone, Falcone Creative Design
203-849-9735 or lynda@falconecreativedesign.com



ART EVENT LISTING:

This December, the Geary Gallery of Darien is proud to present *"The Little Treasures Holiday Show,"* a collection of unique and affordable pieces, all 9" x 12" or smaller. The show includes some of the region's best artists, including three local artists: Kathleen Lee from Long Island, NY, Murray Smith from upstate New York, and Daphne Cochran from Rowayton, CT. The show runs through December 24. The Gallery Geary Gallery is open Wednesday to Saturday, 9:30 a.m. to 5:00 p.m. 576 Boston Post Road, Darien, CT 06820. (203) 655-6633.
www.gearygallery.com

PRESS RELEASE: FOR IMMEDIATE RELEASE

**THE GEARY GALLERY IN DARIEN PRESENTS:
"THE LITTLE TREASURES HOLIDAY SHOW"
FEATURING LOCAL ARTISTS LIKE KATHLEEN LEE, MURRAY SMITH
AND DAPHNE COCHRAN NOW THROUGH DECEMBER 24TH**

Nov. 19, 2012, Darien, CT... The Geary Gallery of Darien (www.gearygallery.com) is proud to present "The Little Treasures Holiday Show," a collection of more than 150 unique and affordable pieces by some of the region's most well-known and respected artists. Featuring only works that are 9" x 12" or smaller, mediums represented include oils, acrylics, pastels, gouaches, and mixed media. Most pieces are between \$200 and \$600. Plus, the gallery will feature three local artists in December: Kathleen Lee from Long Island, NY, Murray Smith from upstate New York, and Daphne Cochran from Rowayton, CT. Please read about these featured artists below.

For truly heart-felt unique gift giving ideas, Geary Gallery is pleased to present its holiday show that features the artwork of more than 25 local artists, all well known masters of their particular medium. The show runs through December 24. Perfect for the holidays, the "Little Treasures" show was inspired by gallery visitors' love of art, and the appeal of one-of-a-kind, memorable keepsakes, combined with the appeal of pieces that are easier on the pocket than some of the more substantial statement pieces that are generally on display at the gallery for acquisition. Featured paintings are in a variety of media including oil, acrylic, pastel, gouache and mixed media. For a full list of artists, visit www.gearygallery.com.

Featured Artist, December: Kathleen Lee

Kathleen was born and raised on Long Island. She began her formal art training at The Stevenson Academy of Traditional Painting in Sea Cliff, NY while attending Long Island University. Lee worked in publishing for many years after receiving her degree in art history. As Director of International Product Development, she traveled the world marketing Sesame Street products. In 1990, Lee resumed her art training at The National Academy of Design and The Art Students League of New York. Lee works primarily with oils and enjoys a wide diversity of subject matter, from marine paintings to pastoral scenes and portraits. She has painted on location in the southwest, Mexico, Ireland, France, Greece and throughout New England. In addition to her easel paintings, Lee also paints murals.



To view Kathleen Lee's work visit our online gallery:

http://www.gearygallery.com/gallery/?function=list&artist_id=15

Featured Artist, December : Murray Smith



Murray Smith from upstate New York is a graduate of The High School of Art & Design and attended both The Art Students League and The School of Visual Arts. For the past 10 years, Smith has studied with John Philip Osborne, who teaches the prismatic palette developed by Frank Vincent DuMond. Smith's use of the prismatic palette and it's principles of light can be clearly seen in his convincing still lifes and landscapes.

Smith has won numerous juried awards, including The Kuhn Oil Painting Award for Floral, The Ridgewood Art Institute Regional Open Juried Show in 2006, 2007 and 2009, The Ruth Beekman Award for Floral, The Jane Peterson Still Life Award from The Hudson Valley Art Association, and The Salmagundi Club Award in 2005. Murray is also an award-winning artist and has created campaigns and posters for more than 200 films, including "Star Wars", "Close Encounters of the Third Kind," "Apocalypse Now," "Taxi Driver," "Superman," and "All the President's Men."

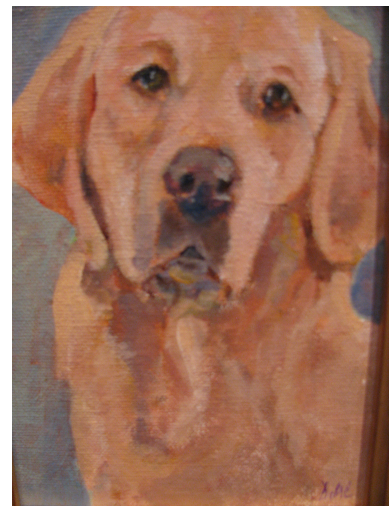
To view Murray Smith's work visit our online gallery:

http://www.gearygallery.com/gallery/?function=list&artist_id=64

Featured Artist, December: Daphne Cochran

Daphne Cochran is a native of Connecticut and presently lives in Rowayton. She studied drawing, pastel, watercolor, oil and acrylic painting at the Silvermine Guild of Arts in New Canaan, and currently works privately with Carey Parks Schwarts at her studio in Stamford.

Cochran works primarily in pastels, doing commissions for families in Connecticut, New York and New Jersey. Her most recent paintings are done in oil and acrylic on various surfaces such as wood, paper and canvas. She has won prizes at the Spectrum Art Show in New Canaan for her dog portrait, "Face of a Friend," and at the YWCA Art Show in Greenwich for a graphic drawing of her son. Her work can be seen at her studio in Rowayton or at the Geary Gallery in Darien.



To view Daphne Cochran's work visit our online gallery:

http://www.gearygallery.com/gallery/?function=list&artist_id=118

“*The Little Treasures Holiday Show*” runs through December 24. To see a full list of the artists participating in this event please visit our website (www.gearygallery.com). The Kathleen Lee, Murray Smith, and Daphne Cochran exhibits are on display through December. Their work is available for acquisition. Everyone is welcome and admission is free. Geary Gallery is open to the public Wednesday through Saturday, 9:30 a.m. to 5:00 p.m., and is located at 576 Boston Post Road in Darien, CT, 06820. For more information, call (203) 655-6633 or visit www.gearygallery.com.

#

About Geary Gallery

Founded in 1984, Geary Gallery is one of Fairfield County's preeminent art galleries, featuring an extensive collection of original artwork. Offering four elaborate display rooms, Geary Gallery maintains an ambitious exhibition schedule to showcase both Connecticut-based artists with national reputations as well as well-known artists from along the Eastern seaboard. The public can enjoy a new show virtually every five weeks. The Gallery also offers a Custom Original Portrait Service, which matches their favorite artists with customers wishing to commission an original portrait of their family, an individual, pet or home. With an extensive inventory of over 2,000 corner frames, Accent Picture Framing and Restoration is a service that is highly regarded for its master framing techniques as well as precision art restoration services for leading museums, auction houses, and historical societies. For more information about Geary Gallery, call (203) 655-6633 or visit <http://www.gearygallery.com>.